



Newent
Community School
and Sixth Form Centre

Ofsted
Good
Provider

Welcome

NEWENT COMMUNITY SCHOOL AND SIXTH FORM CENTRE

STRONG track record of academic success

OPEN and friendly environment

OUTSTANDING pastoral care

FANTASTIC careers guidance and advice

DEDICATED independent study skills support

*Judged
'GOOD'
by Ofsted 2018*

Striving for
Excellence



www.newent.gloucs.sch.uk

Staff, students and visitors comment on the friendly and welcoming atmosphere in the school.



Newent
Community School
and Sixth Form Centre



**Come
and see
our New
Sixth Form
Centre**

POST 16 Evening and Careers Fair

NEWENT COMMUNITY SCHOOL AND SIXTH FORM CENTRE

YOUR POST 16 FUTURE STARTS HERE

Come and talk to our Sixth Form subject staff and representatives from:

- **Higher and Further Education establishments**
- **Work related training providers**
- **Local employers and businesses**

**THURSDAY 7TH FEBRUARY 2019
6.00PM TO 8.00PM**

*Judged
'GOOD'
by Ofsted 2018*

*Striving for
Excellence*



www.newent.gloucs.sch.uk

Mr Alan Johnson, Principal

Watery Lane, Newent, Gloucestershire GL18 1QF Tel: 01531 820550

Email: admin@newent.gloucs.sch.uk | Web: www.newent.gloucs.sch.uk | Twitter: @newentschool



Newent Community School and Sixth Form Centre



History and Heritage

The Newent Grammar School was founded in 1925 and was sited at the crossroads in the building that is now the Community Centre. On 1st April 1965 Newent School was founded and moved into Gloucestershire's first purpose built comprehensive school on our current site. We welcomed hundreds of previous students back to our 50th Anniversary Celebration in April 2015.

The layout of the school is dominated by the spacious Main Hall, equipped with stage lighting and sound system. There is a continuous programme of refurbishment and improvement to ensure up to date facilities in specialist areas.

In the summer of 2016 we completed an ESFA funded refurbishment of the School's kitchen and Meet n Eat facility and the replacement of windows in the History / Music Block, the Gym and Sixth Form Block. This work also included the recladding of the link bridge.

In 2017 we undertook work on a capital investment of c £1million which included the second phase of our window replacement programme and a new build Sixth Form Centre. Students joining our Sixth Form in September 2018 are the first to benefit from this new facility.

We have been successful with two very different capital projects this year. The school now has a completely new perimeter fence and entrance gates. In addition, we have remodelled one of our cookery classrooms into a state of the art, industry-standard catering learning facility.

Facilities include:

- Fully equipped suites of Science Laboratories
- Design Technology Workshops
- Three Information Technology suites
- Independent Learning Centre
- A Sports Hall, Swimming Pool and Gymnasium
- A two pitch AstroTurf and Clubhouse
- Sixth Form Centre
- A suite of Art rooms

What Makes Newent Community School and Sixth Form Centre Special?

Staff, students and visitors comment on the friendly and welcoming atmosphere in the school.

This is a caring school where staff make a point of getting to know every student.

We have a strong pastoral team in the Sixth Form. An experienced and dedicated tutor will support you throughout your time with us.

We are a high achieving school at the very heart of our community. We have a strong tradition of academic success within a positive and caring learning environment based upon mutual trust and respect. Our public exam results this summer illustrate our academic success continues to improve year on year with good outcomes for students of all abilities.

I am thrilled that students joining our Sixth Form in September 2019 will be among the first to take advantage of our new Sixth Form block which will house Study and Breakout Rooms as well as additional teaching rooms.

Facilities for Teaching and Learning are excellent including; a large Library and resources area; specialist areas for all three Sciences, two Languages, Drama, Music, Sports, ICT, Learning Support, Careers, Design Technology and extra facilities for the Visual Arts.

We have well-equipped internal facilities within our Sports Centre which include a Sports Hall, gym, My Ride Cycle Studio, fitness suite and swimming pool.

In addition we have extensive external Sports Facilities including an all-weather, floodlit AstroTurf, tennis/netball courts, cricket nets and numerous football pitches. All of these facilities are available to hire in conjunction with our Clubhouse through the School's subsidiary company Newent Community Sports Limited.

All facilities are used by students in the Physical Education curriculum.

The School and students have benefited with sponsorship from the National Cyber Security Centre, in partnership with GCHQ, as a Cyber School Hub. This sponsorship has provided resources and numerous unique opportunities for students.

We were thrilled to welcome Dr. Jessica Barker to cut our Cyber Hub cake at the launch of the project in March 2018.



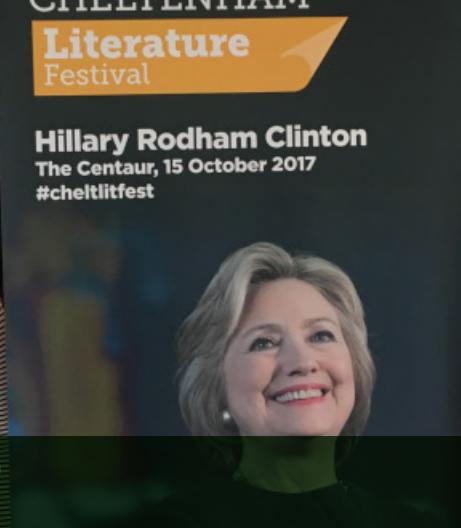
Alan Johnson
Principal

At Newent Sixth Form we strive to:

- Offer the best range of opportunities and courses for ALL students
- Provide a safe, supportive, caring and stimulating environment in which students will be successful whilst enjoying their learning experience
- Encourage all students to achieve their academic and social potential, in preparation for their chosen course or employment
- Support and develop independent study skills
- Give continual and individual pastoral support through an experienced team of tutors
- Offer comprehensive careers advice and guidance to suit

“Pupils are making strong progress”

Ofsted 2018



Thank you for taking the time to read our prospectus.



This is a very exciting stage in your life. Depending on the courses you choose in the next two or three years there will be many opportunities to thrive, both academically and socially. We have high expectations of our students and are very proud of the fact that when they leave us, they go on to achieve their ambitions, whether at university or in the world of work.

At Newent, we pride ourselves in offering an excellent range of subjects to study, a warm and friendly environment in which to learn, fantastic pastoral support and experienced, dedicated specialist teachers who will support you both in and out of the classroom. In addition, we offer a number of extra-curricular activities which will motivate and inspire you.

In the Sixth Form, students should be encouraged to set aside study time every night for reading and home learning – even when no specific work has to be completed for the next day. Organisation and self-discipline is as important for future success as the task set.

All students and parents / carers are issued with access to our electronic home learning planner and communication system called MILK. This provides an overview of all home learning issued which is monitored by staff. Parents are asked to view the system regularly to support their child and communicate with the tutor if necessary.

In addition, we have recently introduced Unifrog to the Sixth Form which supports students to consider the best opportunity for them. This is achieved by providing a one-stop-shop where students can explore their interests, find and successfully apply for their best next step after school. School staff assist students in managing the progression process effectively.

We would like the time you spend with us to be rewarding, challenging and most importantly, fun! Your sixth form experience, after all, should be the most enjoyable and successful years of your life.

Subject outlines are available on the School's website along with all School policies, protocols and key documents. In addition, the key dates for this year's intake are also shown in the Sixth Form section of the website.

I cannot wait to meet you and discuss your choice of subjects and aspirations for the future.

I hope you will want to join us and I look forward to the contributions you will be able to make to our Sixth Form.

Lissa Rogers
Director of Sixth Form



What Next? Your Action Plan

"The Sixth Form also offers a large number of opportunities to become involved in many interesting activities like helping to organise lower school sporting events and the Year 9 camp, as well as venturing to Aberystwyth for the Biology field trip and Austria for the ski trip. We can also be involved in the eco projects around the school, the music and drama productions, and lots of sports. In Year 12 we organise a Christmas party for the senior citizens of Newent. We also have the opportunity to compete in the annual Rotary Public Speaking competition, which is always an interesting event to be able to hear individual views on a very wide range of subjects!"

Everyone interested in joining the Sixth Form will have the opportunity to discuss their ideas about the type of course they wish to follow; these individual discussions will take place with staff, including your Tutor, Head of Careers and the Sixth Form Team.

To make the most of this opportunity you need to do some investigation and thinking beforehand. Here is some advice about this preparation:

- Talk to your subject teachers – the staff who teach you for GCSE will be able to provide you with useful information and advice.
- Speak to your current Tutor – they may be able to give you general advice and offer other views. Getting different options is important in making your final decisions.
- Talk to current members of the Sixth Form and listen to what they have to say. There is nothing quite like talking to 'current customers' for an honest opinion.
- If you want to find out more or ask questions about the Sixth Form, you should go along to the Sixth Form Open Evening and Careers Fair at the School which is held in February each year. The date of this evening is available on the home page of our website. This is for you and your family to find out about the courses available and talk to staff. At this event you will have the opportunity to gather information and discuss possible options with subject staff, course leaders and students. If you have decided already that there is one subject (or more) you definitely want to study, then it might be a better use of your time on the evening to go along to subjects further down on your list of priorities – you might be pleasantly surprised!
- If you would like some careers advice, ask your tutor or talk to Mrs Lawrance, Careers Lead.
- Read the information about the courses available in the following sections of this brochure before making any decisions.
- Don't forget to talk to your family and discuss your ideas and plans with them. After all, you will need their support in the next few years.

Joining the Sixth Form

Application Forms are available online, or from the Sixth Form Office and will be issued to all Newent Year 11 students.

We interview all candidates who apply to ascertain their suitability to join our Sixth Form and then, if successful, discuss and determine the most suitable courses for the student.

The Careers Staff and Sixth Form Tutors will be pleased to advise you about courses in the Sixth Form.

All external applicants need to send a reference from their present school with their application.

The school expects very high standards of behaviour from its Sixth Formers and we reserve the right to refuse access for:

- Inappropriate behaviour during their earlier years, either in this school or any other.
- A poor attendance record.
- A poor attitude and work ethic.



Our aim is to develop mature, confident and thoughtful citizens. We have a thorough programme of Personal, Social and Health Education (PSHE) for all students as well as Citizenship, Work Experience and Careers Guidance.



Expectations

Being a member of Newent Sixth Form, students are expected to give and earn respect from staff, peers and all other students. They are to be seen as role models in all ways – through their standards of dress, their use of the facilities, their attitudes, contributions and achievements.

Our Sixth Form students should be seen by everyone, including themselves, to be positively reinforcing our school values.

Study Guidelines

Our expectation is that we will be able to treat the Sixth Form as the young adults they are. We will aim to help them understand the responsibility and commitment that is necessary to be successful. A part-time commitment is not acceptable. As a guideline, for every hour you spend in the classroom on your chosen subjects you should spend a further hour in personal reading, research, essay writing and course related work. Students need to develop time management skills and the self-discipline required to be a successful independent learner.

Supervised study sessions are timetabled where students can research around their subjects.

Attendance

Students are required to be present for ALL tutorials and subject lessons.

Punctuality and attendance are commented on in many references and students whose attendance is not satisfactory, i.e. below 95%, will be followed up by a member of the Sixth Form team.

Students are allowed to leave the premises for appointments eg medical, but where possible, should only use STUDY lessons and for safety reasons MUST sign out and back in again at main reception.

Assessment and Monitoring

Subject teachers assess all students at regular intervals. This is for the benefit of students, parents and tutors, to monitor progress and give guidance and support as necessary. Progress is monitored in a number of ways:

- Regular meetings with your tutor and subject teachers to review progress.
- Parents' Evenings in both Year 12 and 13, where you and your parents have the opportunity to talk to subject staff about your progress.
- Progress reports are made available via MILK our electronic homework and communication planner.

Any student failing to meet the demands of the course either in terms of academic achievement, meeting deadlines or attendance/behaviour may be removed from a course or asked to leave the Sixth Form.

Behaviour

Students are expected to conduct themselves sensibly and responsibly in the ICT and Study rooms, Common rooms and the Sixth Form Centre; they must respect other people and their property. They are responsible for maintaining the condition of the Common Room and its equipment. Staff will also look to them to set a good example to the rest of the School – to this end, students are requested to sign a Student Agreement with the School on entry into the Sixth Form.

A group of six Sixth Form students (three girls and three boys) in school uniforms are smiling and standing in front of library bookshelves. The shelves are labeled 'Non-Fiction', 'Fiction', and 'M'.

Sixth Form Induction

“Pupils feel
safe and are
safe in the
school”

Ofsted 2018

All Year 12 students are required to take part in the Sixth Form Induction Programme. It is designed primarily to enable new Sixth Formers to be acquainted with the Sixth Form tutor team and their fellow students.

It will give you the opportunity to work as a team, make decisions, manage your time and use thinking and organisation skills, all of which are essential for successful Sixth Form Study. It will also be a very enjoyable experience.

Members of staff will lead the activities. Final details will be given to students at a later date.

Support and Guidance

The Sixth Form has a very experienced team to give support and guidance. There is always someone available to give individual help. Each student will be assigned a personal tutor who is responsible for guiding them through their time in the Sixth Form. The tutor is the first point of contact for both students and parents.

Throughout the students' time in the Sixth Form, extensive careers advice and guidance is given. The Careers Lead is based in the Sixth Form Office and is readily accessible to students. She works alongside personal tutors and is responsible for careers information, interview guidance, Higher Education applications and employment advice.

In 2017 we introduced a mentoring scheme where Year 13 students support their Year 12 peers. We also have a growing alumni network where previous students are mentors for our Year 13 students. This provides support for those moving on to university education or the world of work.



Independent Learning/Study Areas

Students joining our Sixth Form in September 2019 will be able to take advantage of our new Sixth Form. The new building will include a Study Room which will provide the students with the opportunity of a space conducive to independent research, study and revision. In addition, there will be two classrooms plus a Breakout Room for smaller group working.

Within the current Sixth Form building the students will benefit from a designated ICT study room equipped with fully networked computers and access to a wireless connection plus a large Common Room for socialising during break and lunch.

It is vital that you learn to manage your study time effectively to be successful in the Sixth Form.



Newent Community School and Sixth Form Centre



“Every year we have the Winter and Summer Balls which bring the Sixth Form together for a good night out. It is a great chance to dress up and is also a nice ending to a term of hard work, especially in the summer as the Year 13 say goodbye.....sniff!!

Students will be fortunate to have use of the new build from September which will be amazing. The Study Room will be moved into the new build and there will be a dedicated Breakout Room for smaller group work.

Everyone gets along and it is always a friendly environment. Sixth Form at Newent is a fun and friendly place, which guarantees to have something different for everyone, whatever your interests!”

Sixth Form Committee

The Student Perspective

The Sixth Form Committee is elected by the student body and represents the views of Sixth Form students. It organises social events such as a number of formal balls and fund raising activities. Different events are held in the Sixth Form to raise money for a number of different charities. One of the main fund-raising objectives is to support the Sixth Form Counselling Service for fellow students. This is a totally confidential service available for all Sixth Form students if and when they need it.

Sixth Formers are an essential part of Newent Community School and are positively encouraged to take a full and active part in whole school life. There are numerous opportunities for students to become involved in both school based and community activities. Below are just some of the opportunities that students are encouraged to participate in:

- Duke of Edinburgh Award Scheme
- School Sports Activities
- Y9 Brecon Camp helpers
- Drama Productions
- Kenya Link Project
- Scuba Diving
- Inter-House Sports
- Public Speaking
- Voluntary Work
- Senior Orchestra/Choir
- Ski Trips
- Arctic Expedition
- Community Work
- Coast to Coast Cycle Challenge
- Mentoring
- 'My Character' Peer Education
- Passport to Success

Students have the opportunity to experience a number of trips and visits during their time in the Sixth Form.

Recent trips include an Arctic Expedition across Norway, gallery visits to New York, skiing in Austria and a Geography field-trip to Wales.

Closer to home, students have the opportunity to get involved in whole school life in numerous other ways; from organising a Senior Citizens' Christmas Party to becoming a reading partner for Year 7 and through work preparation placements in primary schools and local businesses.

“Pupils receive and understand the advice provided about potential risk and how to stay safe in various situations, including on the internet”

Ofsted 2018



Life as a Sixth Form Student

Life as a Sixth Form student is what you make it. Whatever your abilities, interests or aptitude, Newent has a great deal to offer you. As a student you will be introduced to a variety of new experiences. You will have the opportunity to develop your skills of leadership, organisation and diplomacy, to contribute to the life of the school in the widest possible sense and to take important steps towards fulfilling your career plans.

You will have to spend a lot of time on your work, so it is important that you choose the right courses. Each student will have an individual interview to discuss the most suitable options for them. You will be responsible for organising your own time much more than ever before.

Students generally find that they are in classes much smaller than those to which they have previously been accustomed. This means they receive more individual attention from teachers and also that they are expected to contribute to discussion much more.

"As soon as you begin Sixth Form life, independence and freedom from lower school finally begins – but the two years soon fly by! In the Sixth Form you are able to study the subjects that interest you the most and focus your time on things you enjoy. Sixth Form gives you the chance to study independently and manage your private study time around your lessons."





Newent Community School and Sixth Form Centre



Our extensive grounds contain Sports Facilities which are the envy of the Forest of Dean. In addition to the Sports Hall and Gymnasium we have a Fitness Suite, Train Station and MyRide Cycle Studio. We also make full use of the extensive grass and hard surface Hockey, Football and Rugby Pitches, Tennis Courts, Cricket Square, Athletics Track and a superb full sized Floodlit 'Astroturf' Pitch.

The vast site also provides opportunities for Cross Country Running and Orienteering. We recognise our good fortune in having so much space, and proudly host many Area and County trials and matches.

It is hardly surprising that Newent Community School enjoys a reputation for successful sporting achievements each year. Our students have gained many honours in recent seasons, as District, County and National Championship level.

Some of our former students, who have all gifted a special item of their kit to the school which is proudly displayed in the Main Hall, are particularly successful in their chosen sport:

Morgan Baynham-Williams - Rowing

Alex Cuthbert – Wales Rugby

Vicky Holland – Olympic Triathlete

Jack Rutter – Paralympic England Football Captain

Strengths and Student Successes

We are delighted that our Ofsted report recognises the key strengths of our Sixth Form

Our Sixth Form prepares students well for their futures. Students leave to study at very good universities.

The school is successful in supporting students to gain places at their first choice university, with many studying at prestigious universities.

All students complete a work experience placement in Year 12.

In Sixth Form lessons, learning is good because staff carefully plan for a variety of activities, often giving students responsibility for their own learning and help prepare them for the style of learning they will meet if they go on to higher education.

The curriculum ensures students can achieve well at A-level.

Good advice and support are given when students are deciding if they want to go onto higher education or into employment.

Extra Curricular Opportunities

All extra-curricular opportunities are meticulously planned to extend our students knowledge, skills, teamwork, self-esteem and sense of achievement.

Orchestras and Bands; Choirs; a range of different Clubs (such as Photography, History, Scuba Diving, Science and Engineering); Drama Productions; Camping; International Trips and Exchanges; Curriculum Visits; Field Courses; Ski Trip; Duke of Edinburgh Award Scheme; Arctic Expeditions and Endurance Cycle Challenges.

Sports Clubs and Teams are organised in Athletics, Basketball, Cricket, Cross-Country, Dance, Football, Gymnastics, Hockey, Netball, Rugby and Tennis - all with considerable success.



School Orchestra and Music Groups rehearse regularly, and perform in and out of school

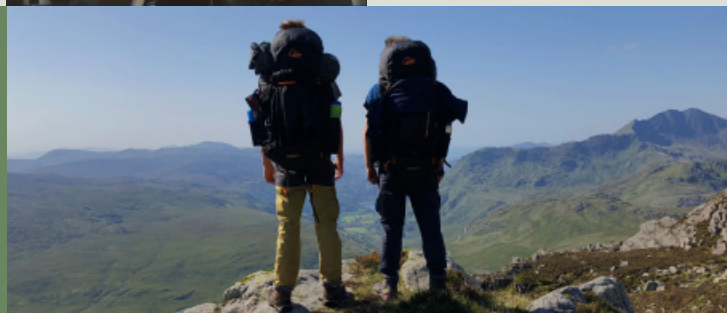


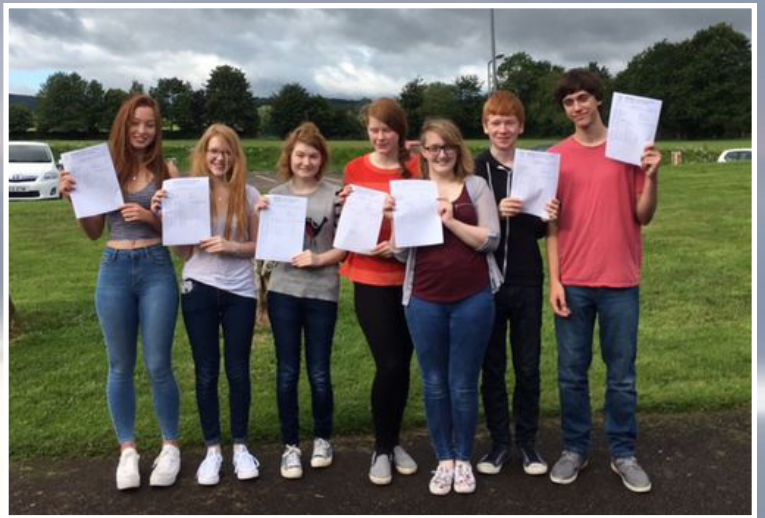
Junior Choir and Senior Choir perform all types of music, and instrumental Groups regularly perform. Music is a very strong extra-curricular activity.



Whole school drama productions, which recently include Bugsy and FAME, are staged annually to huge acclaim. Many of the students involved regularly attend theatre visits across the country in addition to our London Theatre Experience Event each summer.

The Duke of Edinburgh Award Scheme is flourishing, with schemes for Bronze, Silver and Gold pursued by the students in Year 10 – 13. This is a nationally and internationally recognised Award for young people, favoured by employers and universities alike. Participation rates are increasing every year.







NEWENT COMMUNITY SCHOOL AND SIXTH FORM CENTRE

Partnership

Ultimately progress, achievement, enjoyment and support all require a strong partnership involving the school, each student and their parents or carers.

At Newent Community School and Sixth Form Centre staff work hard to build strong, positive links with students, parents and carers. All staff use the full range of communication methods to ensure the partnership between school and home is professional, caring and constructive.

Judged
'GOOD'
by Ofsted 2018

Striving for
Excellence



Mr Alan Johnson, Principal

Watery Lane, Newent, Gloucestershire GL18 1QF Tel: 01531 820550

Email: admin@newent.gloucs.sch.uk | Web: www.newent.gloucs.sch.uk | Twitter: @newentschool